

UHF Panel Antenna SAT-A26/26-LR-P-UHF



Applications:

- Warehouse
- Distribution centre
- Laundry
- Airports
- Libraries
- Hospitals

Order Information:

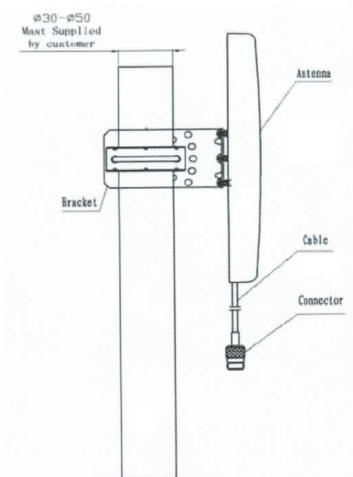
SAT-A26/26-LR-P-UHF Order-No.:400.2626

Accessories:

CABLE-UHF-3m-SMA-N	3 m antenna cable	Order-No.:999.0346
CABLE-UHF-6m-SMA-N	6 m antenna cable	Order-No.:999.0132
CABLE-UHF-12m-SMA-N	12 m antenna cable	Order-No.:999.0153

* for use of Accessories please see UHF Reader specifications

Installation sketch:

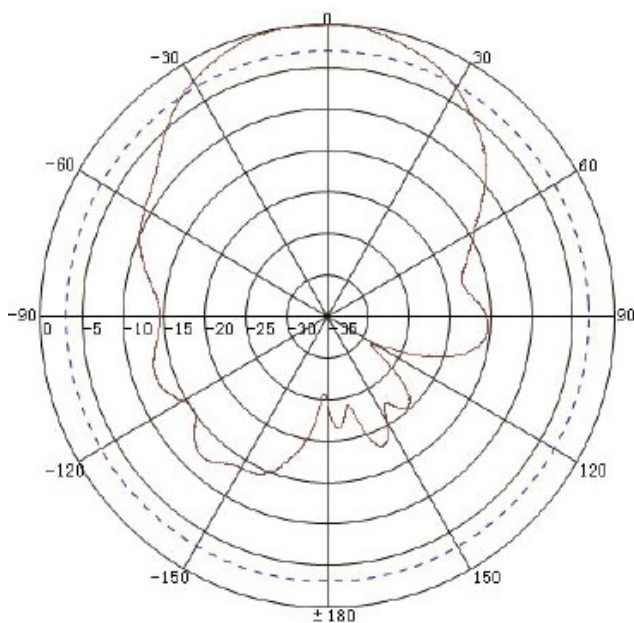


Technical Data:

Dimensions: (l x w x h)	260 x 260 x 40 mm only cover 260 x 260 x 150mm with bracket
Frequency Range	865 - 869 MHz
Gain	9 dBi ± 0,5 dBi
3 dB Beamwidth - Azimuth	65° (± 5°)
Maximum VSWR	< 1,4:1
Polarization	Circular / RHCP
Input Impedance	50 Ohms
Maximum Input Power	100 Watts
Connection	Type N Female
Operational Temperature	-20°C to +70°C
Housing	IP54, Bracket included
Weight	0,75 kg

Radiation Pattern:

Pattern E:



Pattern H:

